



Let's make the world love Chinese pumps



**Head office in South China**

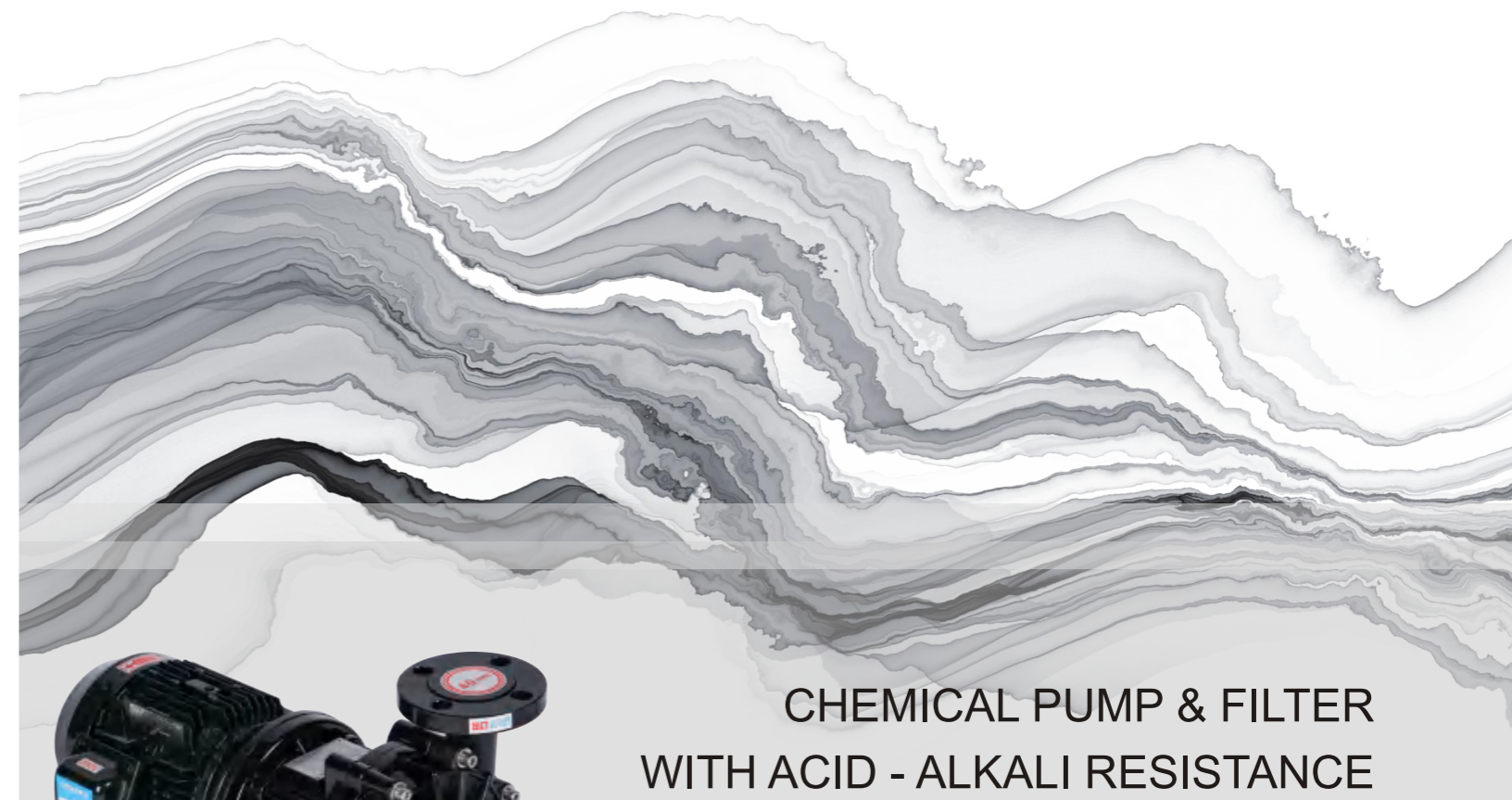
Guangdong Qihua Industry Equipment Co., Ltd  
Building 2, No. 8, Chenwu East Road, Houjie Town, Dongguan City, Guangdong Province  
Tel: +86 400-8558-745 +86 769 8558 7455  
Fax: +86 769-8558 6455  
Chinese website: <https://www.qeehua-pump.com>  
English website: <https://www.qeehuapup.com>  
Vietnamese website: <https://www.qeehua.com>

**Hong Kong Qihua Industry Equipment Co., Ltd**

Address: room 305-306, 3F, No. 28 Hengbang business center, Shanghai Street, Jotun, Kowloon,  
Tel: 00852-94161104  
Fax: 00852-23964380

**Branch office in East China**

Kunshan Qihua Pump Co., Ltd  
Address: No.1, Qiaocheng Road, Kunshan City, Suzhou, Jiangsu Province  
Mobile: + 86 18118179192  
Tel.: + 86 400-6900-665  
Fax: + 86 512-3669 1416



CHEMICAL PUMP & FILTER  
WITH ACID - ALKALI RESISTANCE

**EXPERT IN R&D AND  
MANUFACTURING**

Let's make the world love Chinese pumps

Guangdong Qihua Industry Equipment Co.,Ltd

# 企华飞扬

(热情 有朝气的)

1=<sup>b</sup>A  $\frac{4}{4}$

作词：沈杰衡、曾庆莲 作曲：黎隽

0 0 5 3 2 2 1 | 3 - - 0 2 3 | 4 0 1 5 3 - | 0 1 1. 7 2 - |  
日 出 日 落， 走 过 春 秋 冬 夏 在 磨 砺 中

0 2 3 4. 3 3 1 7 1 | 2 - 0. 1 7 | 6. 5 6 - 06 7 | 1 7 6 4 5. 4 |  
我 们 渐 渐 长 大， 创 业 的 匠 心， 凝 聚 无 数 心 血

3 . 5 5 4 3 4 2 | 2 7 7 7 5 3. 2 1 2 | 1 - - - ||  
心 怀 梦 想， 纵 有 千 难 万 险 也 不 怕

| 1 1 5 1 3 4 4 3 4 2 | 3. 2 1 2 4. 3 4 2 | 4 3. 4 5 - | 5 - - - |  
用 心 地 工 作， 开 心 地 生 活， 五 湖 四 海 我 们 永 远 是 一 家

|| : 6 5 3 3 1 2 3 | 6 5 4 4 3 4 2 | 3 4. 3 2 1 7 | 1 2 1 5 - |  
为 做 企 业 的 典 范， 为 做 行 业 的 专 家， 因 我 们 的 梦 想 在 远 方

6 5 1 1 5 4 3 | 6 5 4 4 3 4 2 | 3 4 3 2 3 | 0 0 6 7 |  
为 做 企 业 的 典 范 为 做 行 业 的 专 家 让 世 界 爱 上 中

1 - - - : ||  
国

Stride forward, struggle endless

Make good pump intently!

Serve you attentively!

Let the world love China pump!



Headquarters office lobby of Qihua

Administrative area  
Public leisure area

Multi-function exhibition hall  
Experience center

Headquarters office building of Qihua

Workshop & Warehouse

## Who is Qihua?

The expert in researching, developing and manufacturing acid - alkali resistant chemical pump / filter

## What does Qihua do?

Specialized in researching, developing, manufacturing and selling acid - alkali resistant pump, chemical liquid filter and related supporting equipment.

## Main products:

Acid - alkali resistant idling magnetic pump

Self-priming acid - alkali resistant pump

Vertical acid - alkali resistant idling pump

Acid - alkali resistant filter

The products are widely used in chemical and environmental protection fields, such as, surface treatment, PCB, LED, medical equipment, coating, metal and plastic plating, waste water and waste gas treatment, etc., having the function in liquid medicine circulation, transmission and filtration.

## 1. High cost performance:

Independent production, stable quality and controllable cost.

## 2. Excellent product performance:

Corrosion resistance, idling resistance, no leakage, low noise, high efficiency, surface corrosion resistance, durable.

## 3. Advanced product technology:

Cooperate with colleges and universities to carry out production, learning and research activities, master cutting-edge technology, and constantly make breakthroughs in the direction of low energy consumption and high efficiency. At present, the unique technology includes: 4P motor magnetic pump addresses the problem of rapid temperature rise of liquid medicine, and intelligent monitoring addresses the problem of idling.

## 4. Continuous upgrading of materials:

Imported CFRETFE material is resistant to strong acid, strong alkali and high temperature.

## 5. Rich product categories:

It can be upgraded to replace all kinds of old equipment.

## 6. Three to five year extended warranty:

Make customers free from worry and labor cost.

## 7. Professional and efficient service:

Before sales, a strong technical team can help customers select models accurately and reduce waste; after sales, tailor training programs for customers to reduce human losses; 4-hour quick response and efficient service!

## 8. Strong qualification:

Patented technology, CE, SGS quality certification of European Union, government designated supplier

## 9. Flexible cooperation mode:

Welcome OEM customization and regional agents.

## 10. Unique family culture:

Stable and happy team, long-term and reliable cooperation.

## Why choose Qihua?



Founder of Qihua: **Mr. Lai Qingyi**

## Development History

### Establishment

Qihua was founded in Dongguan, Guangdong Province

In 2010

### Independent research & development and production

Mr. Lai Qingyi, the founder, led the research & development team in person and started to improve and innovate based on Taiwan technology in the combination with advanced Japanese technology.

In 2011

### Establishment of Hong Kong company

Lay the foundation for international operation.

In 2013

### Strategic cooperation with Kunshan Qihua Pump Equipment Co., Ltd

Jointly develop the East China market!

In 2015

### Upgrade and reorganization

Ms. Zeng Qinglian officially joined in, warming and strengthening the family culture of Qihua, injecting new impetus into the team!

In 2018

### Upgrading and transformation

Carry out strategic cooperation with University experts, which is a milestone for the successful transformation of Qihua from traditional manufacturing industry to high-tech industry!

In 2019

### The marketing center was established. Overall layout at home and abroad

Under the joint leadership of Ms. Zeng Qinglian and Mr. Lai Qingyi, a formal marketing team has been set up and a marketing center has also been established to successfully connect customers from seven countries based on China to the world. At the same time, the enterprise mission has been upgraded: let the world fall in love with Chinese pumps!

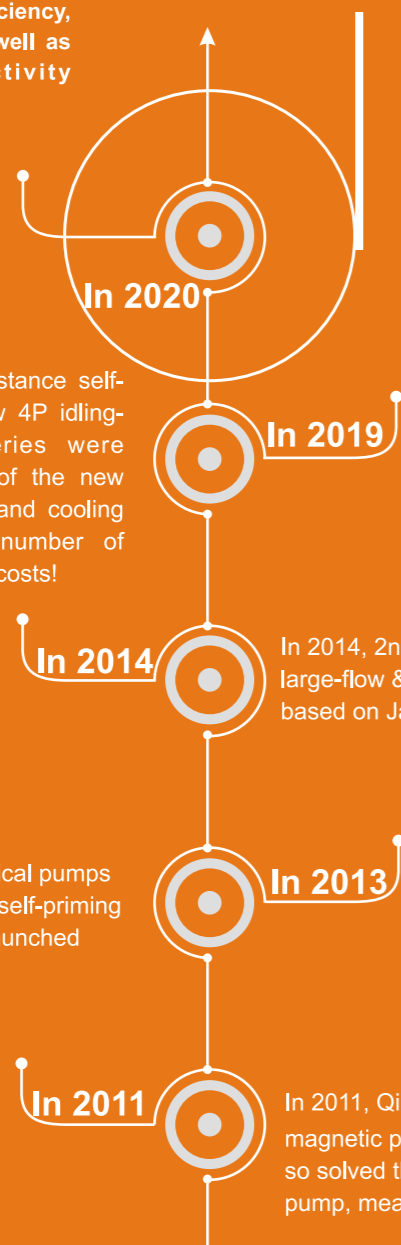
### The new headquarters was completed.

The new headquarters was put into use on April 28, 2020, integrating R&D, production, sales, industry-university-Research, employee learning and growth, and partner learning and exchange.

## Research and development process



Continue to innovate, in the future, our products will be committed to ultra-high reliability and life, ultra-high efficiency, ultra-low vibration and noise, as well as intelligent, network connectivity direction.....



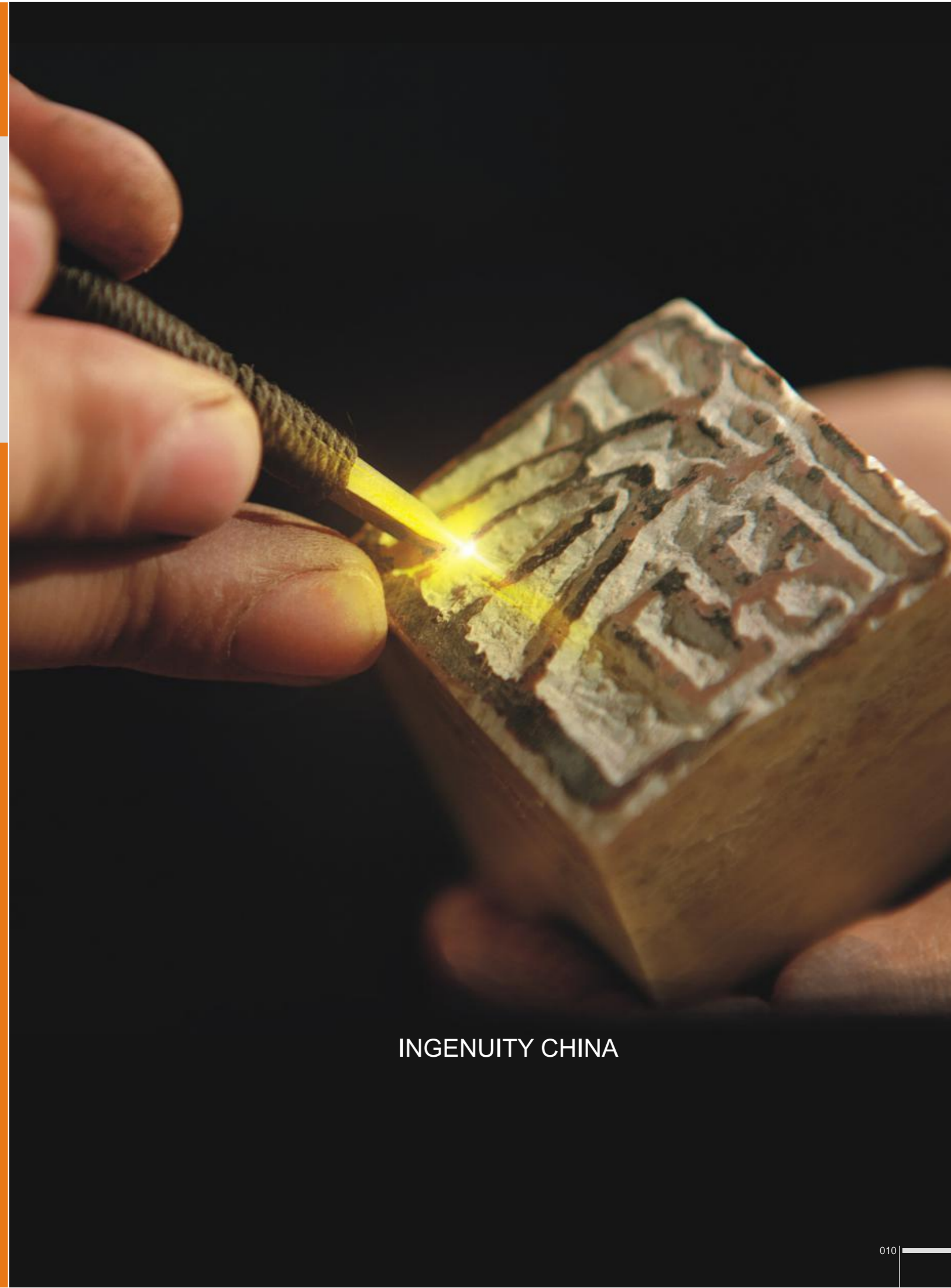
In 2020, the product keeps upgrading, and the fourth-generation industry leading "intelligent three-defense technology" was independently developed, that is, anti-air defense transfer, anti-overload and anti-phase deficiency. This technology solves the pain point that users have been faced with for a long time, which is caused by improper operation of workers, and greatly reduces users' worries at home!

In 2019, 3rd generation idling-resistance self-priming pump, low-power high-flow 4P idling-resistance magnetic pump series were launched. The powerful function of the new magnetic pump in energy saving and cooling brings new hope for a large number of customers in saving manufacturing costs!

In 2014, 2nd generation large-flow high-lift magnetic pump and large-flow & high precision filter were successively developed based on Japanese technology.

In 2013, 1st generation vertical pumps outside the tank, filters and self-priming pumps were successively launched

In 2011, Qihua successfully developed 1st generation sealless magnetic pump series based on Taiwanese technology, and so solved the problems of fluid leakage and air leakage in seal pump, meanwhile achieved low power with large flow.



INGENUITY CHINA

# QEEHUA VISION

## Expert in chemical pump industry

Leading technology

Stable quality

Long quality assurance

Efficient service



## Model of enterprise happiness

Corporate profits

Team growth

Employee happiness

Dedication to society





## Qeehua qualifications

Existing patents and honorary qualifications

Through nearly 10 years' efforts, the enterprise has won the honors awarded by multiple platforms and institutions, obtained the copyright registration certificate of the national copyright administration, as well as the qualifications such government procurement access, national manufacturing network certification suppliers, etc. Moreover, the enterprise is currently applying for the recognition of the national high-tech enterprise.



The enterprise has been engaged in independent research and development since 2012. At present, it has possessed ten utility model patents, one appearance patent and two CE certificates. In addition, it is applying for three utility model patents and two invention patents, and plans to apply for more than 20 kinds of patents.





## Journey to skyline, Qeehua as family

In 2018, with the help of consultant teachers, led by Mr. Lai Qingyi, general manager, and Ms. Zeng Qinglian, general political commissar, all employees scientifically and systematically established the corporate culture based on the concept of home under the modern enterprise model, so as to comprehensively improve the cohesion and combat effectiveness of the enterprise!

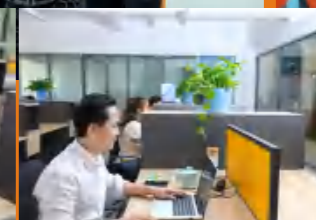
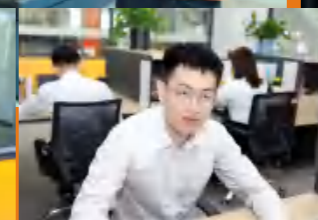
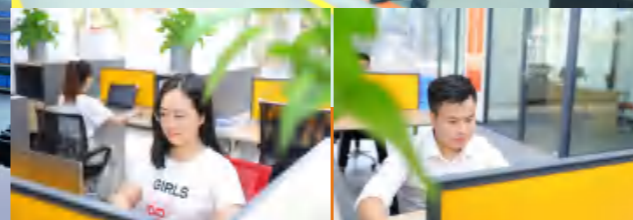
Enterprise is family, mutual aid is family tradition, warmth is family rule, struggle is family motto, innovation is family scene, development is family duty, good pump is the family foundation.

Journey to skyline, Qeehua as family (family culture is the basis of Chinese culture, and also the cultural driving force for Qeehua employees to move forward fearlessly).

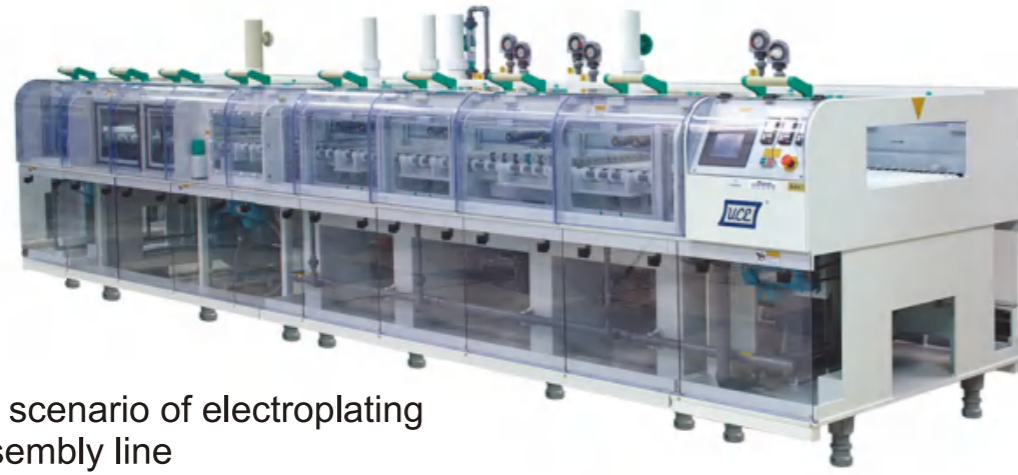
In 2018, Qeehua and ecological enterprise service platform signed the project of "family culture construction and management improvement". Led by Mr. Lai Qingyi, general manager, and Ms. Zeng Qinglian, general political commissar, all employees scientifically and systematically established the corporate culture based on the concept of home under the modern enterprise model, so as to comprehensively improve the cohesion and combat effectiveness of the enterprise!



Work is practice, the company is the Dojo  
Strengthen the exercise, enhance the skill, improve the state;  
Learn to love yourself, family, society and work  
We hope that every Qeehua employee will continue to grow,  
Meet a better self in Qeehua!



⦿ Application scenario of electroplating or PCB assembly line



## Practical cases

The figures show the actual application scenarios of our products in well-known enterprises, such as Dongfeng Nissan, BYD, Beijing Hyundai Samsung, Foxconn, etc.

⦿ Application scenario of wastewater transportation

⦿ Application scenario of liquid medicine transportation and recovery



⦿ Application scenario of waste gas purification





## PART OF OUR SUPPLIERS

## PART OF OUR CUSTOMERS

Your contribution is indispensable to the high quality products of Qeehua

Think what the customer thinks, and be grateful to every customer

**TOSHIBA**



**TONG 東明**



台湾化學纖維股份有限公司  
FORMOSA CHEMICALS & FIBRE CORPORATION





90°

# Product index

025	Magnetic pump series
039	Centrifugal pump series
053	Vertical pump series
081	Filter
090	Pneumatic diaphragm pump
091	Metering pump
093	Submerged pump
097	Blower
099	Accessories
100	Annexed table

# Accessories



Vertical mounted flowmeter



Diaphragm pressure gauge



Flange plate



Rubber gasket



Elbow



Y-type filter



Dual-union ball valve



Union connector



Union ball valve

Attached table: list of drug resistance

Drug name	%	°C	Material of pump head				Material of shaft seal			Rubber material		
			Concentration	Temperature	GFRPP	CFRPP	PVDF	CFRETFE	Ceramic	Carbon	Ssic	EPDM
Hydrochloride HCL	15	40	●	●	●	●	○	●	●	●	●	●
		60	●	●	●	●	●	●	●	●	●	●
		80	○	○	●	●	●	●	●	●	○	●
	32	40	●	●	●	●	●	●	●	●	○	○
		80	○	○	●	●	●	●	●	●	●	●
Hydrogen peroxide solution H <sub>2</sub> O <sub>2</sub>	10	40	●	●	●	●	●	x	●	●	●	●
		60	○	○	●	●	●	●	x	●	●	●
		80	x	x	●	●	●	●	x	●	●	●
Phosphoric acid H <sub>3</sub> PO <sub>4</sub>	25	40	●	●	●	●	●	●	●	●	●	●
		60	●	●	●	●	●	●	●	●	●	●
		80	○	○	●	●	●	●	●	●	○	●
	50	40	●	●	●	●	●	●	●	●	○	●
		80	○	○	●	●	●	○	○	●	○	●
Sodium hypochlorite NaClO	10	40	○	○	●	●	●	○	●	●	●	●
		60	△	△	●	●	●	●	△	●	●	●
		80	x	△	●	●	●	●	x	●	●	●
Acetic acid CH <sub>3</sub> COOH	25	40	●	●	●	●	●	●	●	●	●	x
		60	●	●	●	●	●	●	●	●	●	x
		80	○	○	●	●	●	●	●	●	●	x
Hydrofluoric acid HF	25	40	x	●	●	●	x	○	●	●	●	●
		60	x	○	●	●	x	○	●	●	●	●
		70	x	x	●	●	x	○	●	○	●	●
Aqua regia HCL+HNO <sub>3</sub>	3:1	40	x	x	●	●	●	x	●	●	○	○
		60	x	x	●	●	○	x	●	●	○	○
		80	x	x	●	●	●	x	●	●	●	●
Chromic acid CrO <sub>3</sub>	20	40			●	●	●					●
		60			●	●	●					●
		80			●	●	●					○
Sulphuric acid H <sub>2</sub> SO <sub>4</sub>	30	40	●	●	●	●	●	●	●	●	●	●
		60	●	●	●	●	●	●	●	●	●	●
		80	●	●	●	●	●	●	●	●	○	●
		95			●	●	●	●	●	●	●	●
	60	40	●	●	●	●	●	●	●	●	●	●
		60	●	●	●	●	●	●	●	●	●	●
		80	○	○	●	●	●	●	●	●	○	●
	98	40			●	●	●	●	●	●	●	●
		60			○	●	●	●	●	●	●	●
Sodium hydroxide NaOH	45	40	●	●	●	●	△	●	●	●	○	○
		60	○	○	○	●	x	●	●	●	●	△
		80	○	○	x	●	x	●	●	○	△	△
Ferric chloride FeCl <sub>3</sub>		40	●	●	●	●		●	●	●	●	●
		60	●	●	●	●		●	●	●	●	●
		80	●	●	●	●		●	●	●	●	●
Cupric cyanide Cu(CN) <sub>2</sub>		40	●	●	●	●	△	●	●	●	●	●
		60	●	●	●	●	△	●	●	●	●	●
		80			●	●	●	●	●	●	●	●
Zinc chloride ZnCl <sub>2</sub>		40	●	●	●	●	●	●	●	●	●	●
		60	●	●	●	●	●	●	●	●	●	●
Nickel sulfate NiSO <sub>4</sub>		40	●	●	●	●	●	●	●	●	●	●
		60	●	●	●	●	●	●	●	●	●	●
Nitric acid HNO <sub>3</sub>	20	40	●	●	●	●	●	●	●	●	●	●
		60	○	○	●	●	○		●	●	●	●
		80	○	○	●	●	●		●	●	●	●
	50	40	●	●	●	●		●	●	●	●	●
60		○	○	●	●		●	●	●	●	●	

● Outstanding ○ Good △ Fair × Poor