

Cheonsei **DIAPHRAGM**
Metering Pumps

Medium Sized
For Chemical Dosing **KM**



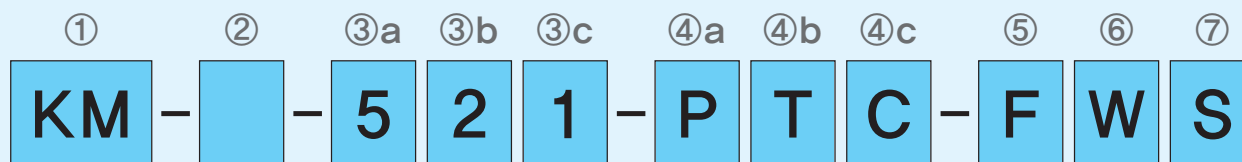


KM Series

Cheonsei Medium Sized Metering Pumps KM

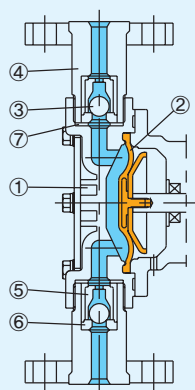
- Economic and compact design.
- Various LEM (Liquid End Material) available to inject all kinds of chemical liquids.
- Efficiently durable and hermetic driving part structure for out-door installation.
- Excellent durability in a continuous running for long time, with a reduction gear by the way of oil bath lubricant.
- A small noise by the helical gear which made by a precised processing.
- The dial by the micrometer method, makes it possible to adjust the capacity precisely during operation.
- Hands free installation and maintenance.

Model Code



- ① Series Name KM:KM Series (Diaphragm Type Medium Sized Metering Pumps)
- ② Option No mark:No Option A:BLDC M/C UNIT E:Air Relief Valve F:Relief valve
- ③ Nominal Capacity $ab \times 10^c \rightarrow 52 \times 10^1 = 520(\text{mL}/\text{min})(60\text{Hz})$
- ④ Liquid End Material
 a.Head P:PP(PVC) F:PVDF S:SS304 6:SS316 X:Special
 b.Diaphragm T:PTFE E:EPDM X:Special
 c.Check Ball C:CERAMIC 6:SS316 X:Special
- ⑤ Connection Type F:Flange H:Hose X:Special
- ⑥ Viscosity Limit W:Standard(0~100cP) V:High Viscosity(100~2,000cP)
- ⑦ Power Supply S:1 ϕ 220V A:3 ϕ 220/380V B:3 ϕ 440V 50/60Hz combined use

Liquid End Material



Part name	Materials Capacity	PTC(PE6)		FTC	ST6		6T6	
		500~102	212	500~102	500~102	212	500~102	212
① Head		PP	PVC	PVDF	SS304		SS316	
② Diaphragm		PTFE(EPDM)		PTFE	PTFE		PTFE	
③ Check Ball		CERAMIC(SS316)		CERAMIC	SS316		SS316	
④ Joint		PP	PVC	PVDF	SS304		SS304	
⑤ Ball Guide		PP	PVC	PVDF	PVDF	SS304	PVDF	SS316
⑥ Ball Seat		FKM(EPDM)	PVC	PTFE	PTFE	SS304	PTFE	SS316
⑦ O-ring/packing		CERAMIC(SS316)		PTFE	PTFE		PTFE	

※ Material other than standard can be used for special purpose pump.
Please contact us or distributor in your area.

Specifications

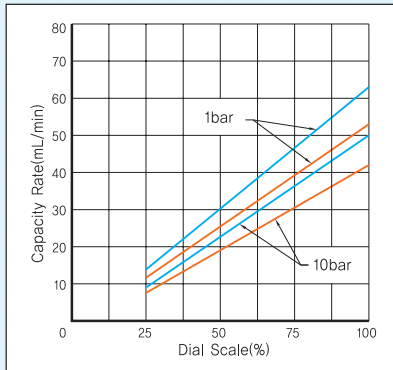
Model	Spec.		Max. Discharge Pressure (bar)	Stroke Number(SPM)		Stroke length (mm)	Diameter of diaphragm (mm)	Connection		Flange	Motor	Weight (kg)
	Max. Capacity(mL/min)			50Hz	60Hz			Hose				
	50Hz	60Hz						PVC	PTFE			
KM-500	42	50	10	95	114	3	30	∅6×∅11	∅10×∅12	KS10K 15A	60W	8.6
KM-121	104	125	10	95	114	4	36					8.6
KM-251	213	255	10	95	114	5	45					8.6
KM-521	433	520	7	95	114	6	55	∅12×∅18	-			8.9
KM-102	854	1025	5	95	114	6	68					8.9
KM-212	1792	2150	3	95	114	7	90					9.9

- ※ 1. Max. capacity are tested under the condition as follows.
 - Temperature : ambient - Liquid : Potable water - Discharge pressure : Max. discharge pressure.
- 2. The limits of liquid temperature are 0~50°C for PTC·FTC type and 0~80°C for ST6·6T6 type.
- 3. Self-priming capacity
 - KM-500, 121 : 1 meter - KM-251~212 : 2 meter
- 4. Ambient temperature limit is 0~40°C.
- 5. The Munsell No. of painting is 0.6PB 4.8/10.6.
- 6. The contents on this data may be revised for improvement without prior notice.

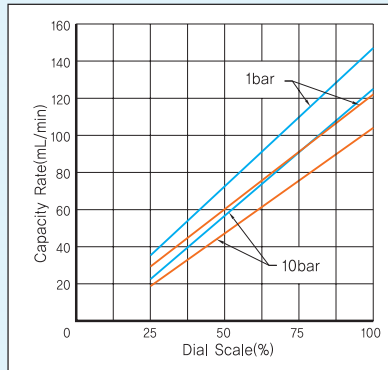
■ Performance Curves

— 60Hz, — 50Hz Conditions : Room Temperature, Clean water, Suction Head - 1m

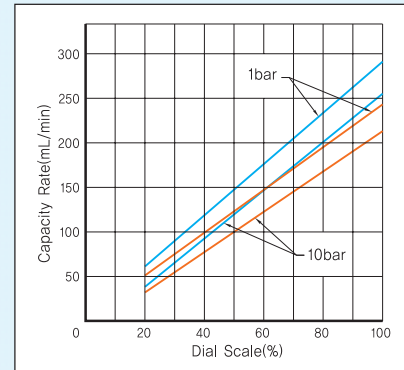
● KM-500



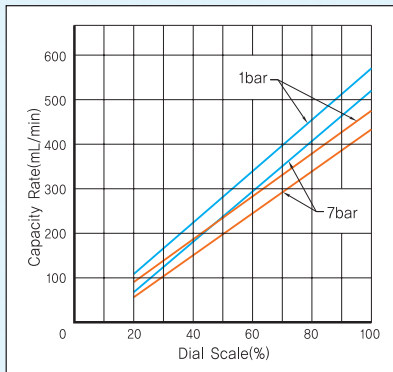
● KM-121



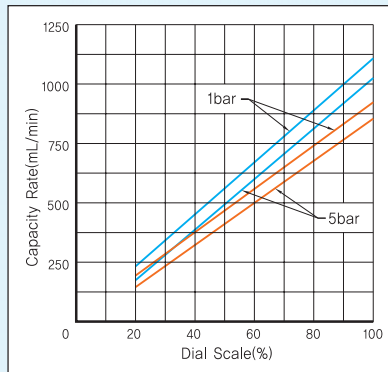
● KM-251



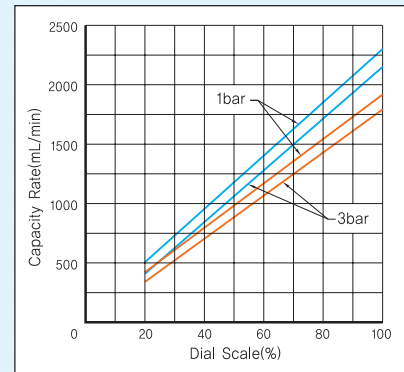
● KM-521



● KM-102

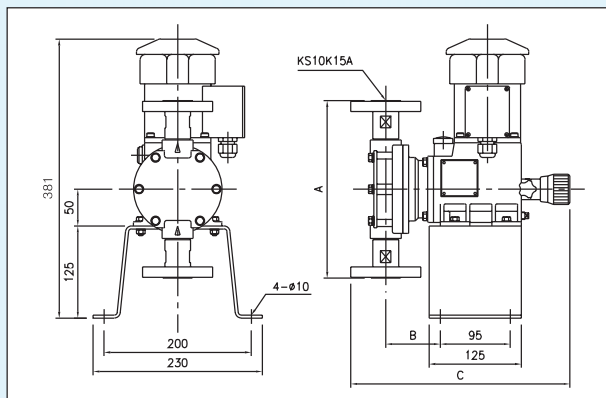


● KM-212



■ Dimension

(Unit:mm)



		Model	KM-500	KM-121	KM-251	KM-521	KM-102	KM-212
Size								
A	PTC		164	164	164	184	190	241
	FTC		164	164	164	184	190	241
	ST6		166	166	166	186	192	231
B	PTC		69	69	68	73	73	74
	FTC		69	69	68	73	73	74
	ST6		67	67	68	72	73	73
C	PTC		290	291	290	296	296	298
	FTC		290	291	290	296	296	298
	ST6		288	289	290	295	296	297

*The above specifications and design could be changed for improvement without prior notice

