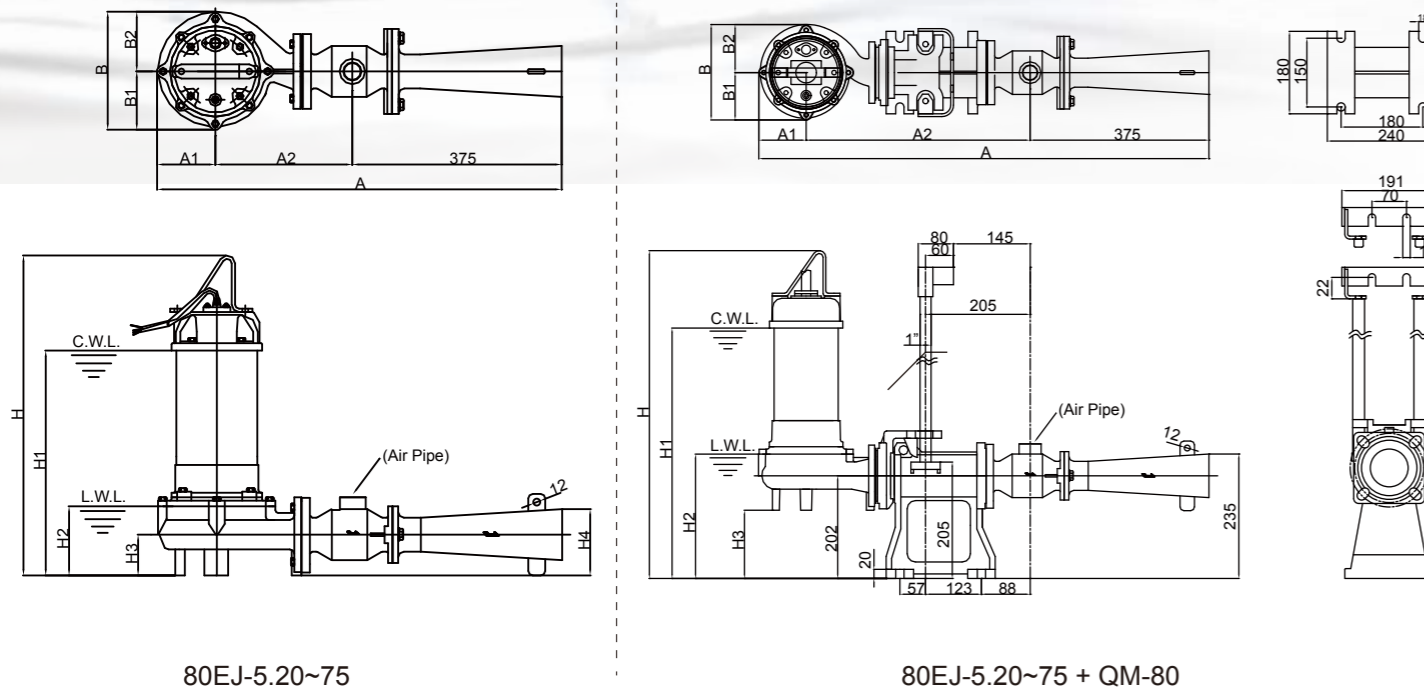


## EJ-Series Dimensions



80EJ-5.20~75

80EJ-5.20~75 + QM-80

### Dimensions (mm)

Type	A	A1	A2	B	B1	B2	H	H1	H2	H3
80EJ-5.05(QM)	656(876)	82	199(419)	163	76	87	419(566)	304(451)	124(271)	70(147)
80EJ-5.10(QM)	656(876)	82	199(419)	163	76	87	494(625)	351(498)	124(271)	70(147)
80EJ-5.20(QM)	725(945)	103	247(467)	210	105	105	532(715)	400(545)	150(265)	71(134)
80EJ-5.30S(QM)	725(945)	103	247(467)	210	105	105	572(735)	440(585)	150(265)	71(134)
80EJ-5.30T(QM)	725(945)	103	247(467)	210	105	105	552(735)	420(565)	150(265)	71(134)
80EJ-5.50(QM)	758(978)	110	273(493)	218	98	120	633(775)	468(597)	160(282)	82(110)
80EJ-5.75(QM)	758(978)	110	273(493)	218	98	120	673(815)	508(637)	160(282)	82(110)

» S: Single Phase ; T: Three Phase  
 » (QM) identifies EJ pump with QM-80 Q.D.C.



**EVAK PUMP TECHNOLOGY CORP.**

No. 551, Zhongshan Rd., Qingshui Dist., Taichung City 436, Taiwan.  
 TEL: +886-4-26233556 Fax: +886-4-26235559



# EJ

## SERIES 50HZ

Submersible Jet Aerators



[www.evak-pumps.com](http://www.evak-pumps.com)

# EJ SERIES 50HZ

Submersible Jet Aerators

## Feature

- / High oxygen transfer rate
- / BOD easy to remove from wastewater treatment
- / Mixing and stirring applications for uniform MLSS
- / Provide coarse/gross bubbles

## Application

- / The wastewater treatment aeration and agitation

## Specifications

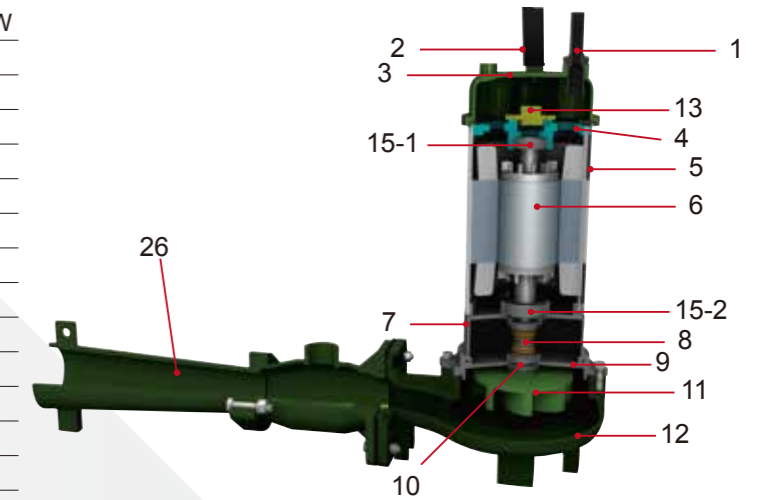
Liquid Temperature	0~40°C (32~104°F)	
Submersible depth	10M	
<b>Motor Part</b>	Frequency	50Hz
	Pole	2 Pole
	Type	Dry Motor
	Insulation	0.5~3HP:Class B ; 5~7.5HP:Class F
<b>Pump Part</b>	Protection	IP 68
	Protector	Auto-cut
	Bearing	Ball Type
	Mechanical seal	Dual. Mechanical Seal
	Impeller	Semi-Open



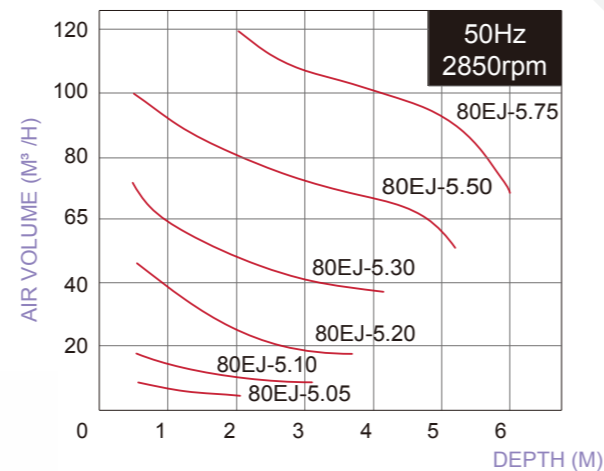
80EJ-5.20+QM80

## Parts and Material List

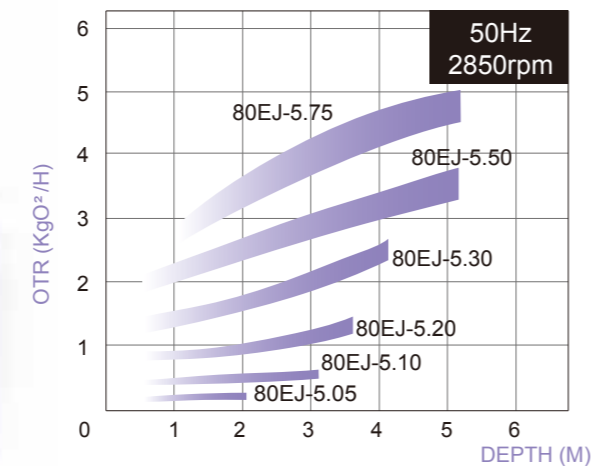
No	Part	Material
1	Cable	H07RN-F /SJTOW/STOW
2	Handle	Nylon 6/SS41
3	Motor Cover	Nylon 66/FC 200
4	Bracket	FC 200
5	Motor Housing + Stator	SUS 304
6	Shaft with Rotor	SUS 410
7	Oil Chamber	FC 200
8	Double Mech.Seal	Upper : CA / CE Lower : SIC / SIC
9	Seal Housing	FC 200
10	Oil Seal	NBR
11	Impeller	FC 200
12	Pump Casing	FC 200
13	Protector	KLIXON
26	Jet Aerator	FC 200
15-1	Upper Bearing	TPI
15-2	Lower Bearing	TPI



## Performance Curve



## Performance Curve



80EJ-5.20

## Data Chart

Type	Output		Discharge Inch	F.L.A.		Rated			Aeration Tank			Free Passage mm	Weight(W/O Cable)		Q.D.C
	HP	kW		1ø 230V	3ø 400V	AIR m³/hr	OTR kg-O²/H	HR m	L (M)	W (M)	H (M)		1ø-kg	3ø-kg	
80EJ-5.05	0.5	0.37	3"	4A	1.2A	5	0.12~0.23	1.5	2	1.8	2	-	21.7	21.4	QM-80
80EJ-5.10	1	0.75	3"	5A	2.1A	10	0.3~0.5	2	3	2.5	3	-	26.5	26.2	QM-80
80EJ-5.20	2	1.5	3"	11.8A	3.6A	22	0.9~1.1	2.5	4	3.5	3.5	-	37	36.3	QM-80
80EJ-5.30	3	2.2	3"	15A	4.5A	40	1.9~2.2	3	5	4.5	4	-	41.1	37.4	QM-80
80EJ-5.50	5	3.7	3"	-	8.2A	70	2.8~3.3	3.5	6	5	5	-	-	51.2	QM-80
80EJ-5.75	7.5	5.5	3"	-	11.5A	100	4.2~4.8	4	7	6	6	-	-	57.2	QM-80

» QM-80 Duck Foot is optional.