



50AFU2.4
50AFU2.8

80AFU21.5
80AFU22.2

80AFP21.5
80AFP22.2

80AFU23.7



FEATURE

- International standard design : cable, auto-cut, dry-motor, silicon carbide mechanical seal, high grade cast iron offering highest quality and performance.
- P/U/E multiple impellers designed to handle sewage solids and/or fibrous substances.
- Superior abrasion resistant mechanical seal manufactured with silicon carbide to ensure the best seal effect.
- Oil lip seal mounted outside of seal chamber stops solids gathering around seal faces.
- Full range offering low to high head and flow capabilities, with compact and easy installation. Also, available with Guide Rail System, which allows automatic remote connection and disconnection without entering the pit.

APPLICATIONS

- Drainage of waste water from the attenuation tank, purifying tank and sewage tank in water treatment plant.
- Drainage of waste water containing fibrous additives from leather factory, dyeing factory and food processing factory.
- Sewage management, accumulated water, septic tank, stock farm.
- Pumping sewage from hotels, restaurants, schools and public buildings.
- Sewage management, accumulated water, septic tank, stock farm.
- Pumping sewage from hotels, restaurants, schools and public buildings.

IMPELLER TYPE

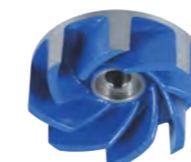
P Type Impeller

Semi-open (Single Vane Impeller) : Excellent to use with waste materials to prevent from clogging.



U Type Impeller

Semi-open(Vortex Impeller) : produces a vortex (whirlpool effect) allowing long fibrous materials and other solid waste to pass through without contact with the impeller.

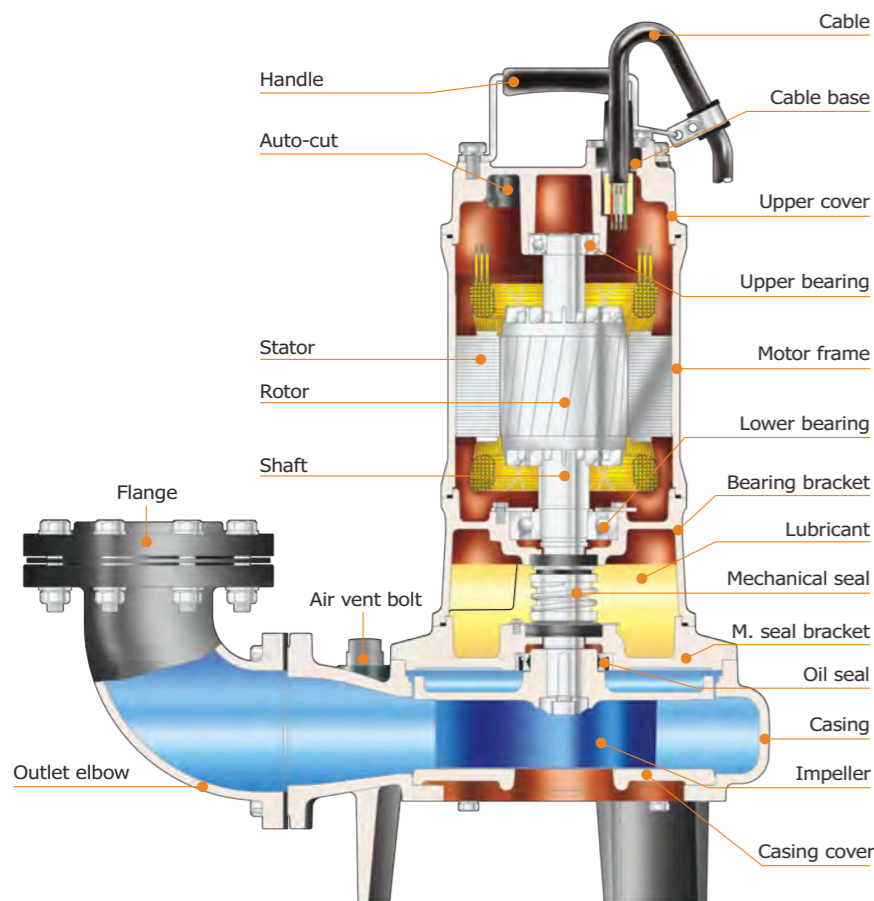


E Type Impeller

Enclosed Channel impeller : High impeller efficiency and clog-resistant design, primarily used for large pump applications.



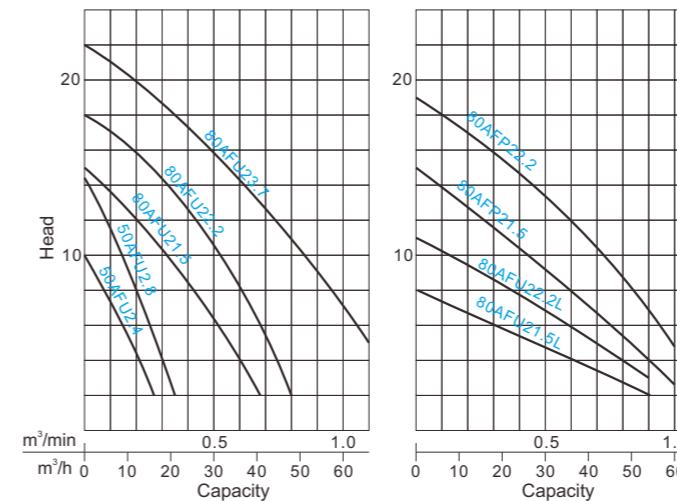
Note: The vortex impeller will cause higher amperage when operated in reverse direction.



PRODUCT NOMENCLATURE

80	AF	P	2	1.5
Discharge mm	Type	Impeller type (P/U)	Pole	kW

PERFORMANCE CURVES



PERFORMANCE SPEC.

Pole	Model	Power HP(kW)	Discharge Inch(mm)	Phase	Start Method	Head m	Capacity		Weight kg 1 / 3	Solid Passage mm	Dimension (mm)		
							m³/min	m³/h			Length	Width	Height
2P	50AFU2.4	0.5(0.4)	2"(50)	1	Capacitor	6	0.15	9	19	35	236	152	418
					Direct				18				
	50AFU2.8	1(0.75)	2"(50)	1	Capacitor	8	0.2	12	20	35	236	152	418
					Direct				19				
	80AFU21.5	2(1.5)	3"(80)	1	Capacitor	8.5	0.4	24	40	50	379	202	575
					Direct				36				524
	80AFU21.5L	2(1.5)	3"(80)	1	Capacitor	4.5	0.5	30	43	76	402	217	626
					Direct				39				575
	80AFU22.2	3(2.2)	3"(80)	1	Capacitor	12.5	0.4	24	42	50	379	202	607
					Direct				38				524
	80AFU22.2L	3(2.2)	3"(80)	1	Capacitor	7	0.5	30	45	76	402	217	659
					Direct				41				575
80AFU23.7	5(3.7)	3"(80)	3	Direct	16	0.5	30	56	56	478	220	588	
				Capacitor				42				576	
80AFP21.5	2(1.5)	3"(80)	1	Capacitor	8	0.6	36	38	35	413	260	525	
				Direct				45				608	
80AFP22.2	3(2.2)	3"(80)	1	Capacitor	12	0.6	36	45	35	413	260	608	
				Direct				40				525	

Note : Weight W/O Cable

SPECIFICATIONS

Item	Description	
Liquid temp.	0~40°C(32~104°F)	
Applications	Wastewater · Sewage	
Max depth	30m	
Pump sect.	Impeller	Semi-open · Vortex
	M. seal	Double M. seals
	Bearing	Ball type
Material	Upper cover	FC-200
	Casing	FC-200
	Impeller	FC-200
Motor sect.	M. Seal	Lower:SiC/SiC · Upper: CA/CE
	Motor	Dry motor
	Insulation	2P (3000RPM)
	Frequency	B Class (5HP:F Class)
	Protector	50Hz
Material	Frame	Auto-cut
	Main shaft	FC-200
	Cable	SUS410 (2~5HP : SUS403)
		VCT or H07RN-F or SJOW/SOW

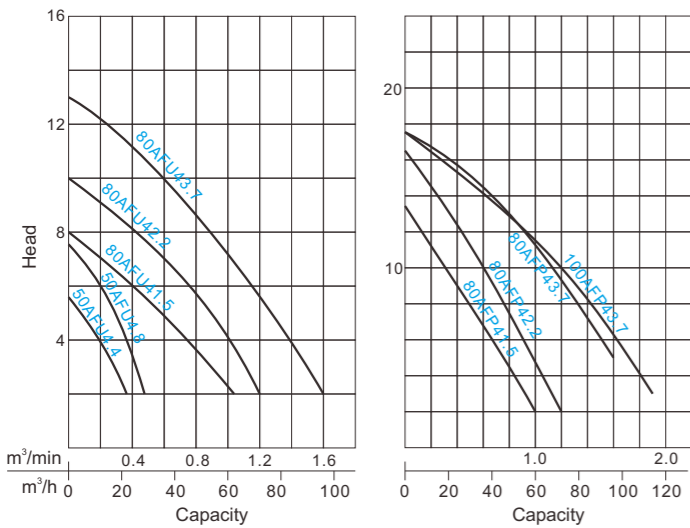
※Pumps can be customized to fit specifications.



PRODUCT NOMENCLATURE

80 Discharge mm AF Type U Impeller type (P/U) 4 Pole 2.2 kW

PERFORMANCE CURVE



SPECIFICATIONS

Diameter (mm)	50 · 80 · 100	
Liquid temp	0~40°C(32~104°F)	
Liquid nature	Waste water and sewage	
Max depth	30m	
Pump sect.	Impeller	P type : Semi-open, Non-clog
	Mech seal	Double mechanical seal
	Bearing	Ball type
	Upper cover	FC-200
	Casing	FC-200
	Impeller	FC-200
Motor sect.	M. seal	Sic/Sic
	Motor	Dry motor 4P(1500RPM)
	Insulation	B Class (5HP : F Class)
	Frequency	50Hz
Material	Auto-cut	Automatic reset motor protector
	Frame	FC-200
	Main shaft	SUS420J2 (0.5~1HP : SUS403)
	Cable	VCT

Note : Pumps can be customized to fit specifications.

PERFORMANCE SPEC.

Pole	Model	Power HP(kW)	Discharge Inch(mm)	Phase	Start Method	Head m	Method		Weight kg 1 /3	Solid Passage mm	Dimension (mm)		
							m³/min	m³/h			Length	Width	Height
4P	50AFU4.4	0.5(0.4)	2"(50)	1	Capacitor	3.5	0.25	15	30	50	346	204	516
	50AFU4.8	1(0.75)	2"(50)	3	Direct	5	0.3	18	28	50	346	204	516
	80AFU41.5	2(1.5)	3"(80)	1	Capacitor	5	0.6	36	31	76	500	256	700
	80AFU42.2	3(2.2)	3"(80)	3	Direct	7	0.6	36	29	80	538	289	573
	80AFU43.7	5(3.7)	3"(80)	3	Direct	10	0.6	36	52	80	538	289	697
	80AFP41.5	2(1.5)	3"(80)	1	Capacitor	8	0.5	30	52	50	530	290	645
	80AFP42.2	3(2.2)	3"(80)	3	Direct	10	0.6	36	51	50	553	313	567
	80AFP43.7	5(3.7)	3"(80)	3	Direct	14.5	0.6	36	70	50	553	313	643
	100AFP43.7	5(3.7)	4"(100)	3	Direct	11.5	1.0	60	79	50	553	313	643
	100AFP43.7	5(3.7)	4"(100)	3	Direct	11.5	1.0	60	82	50	570	313	643

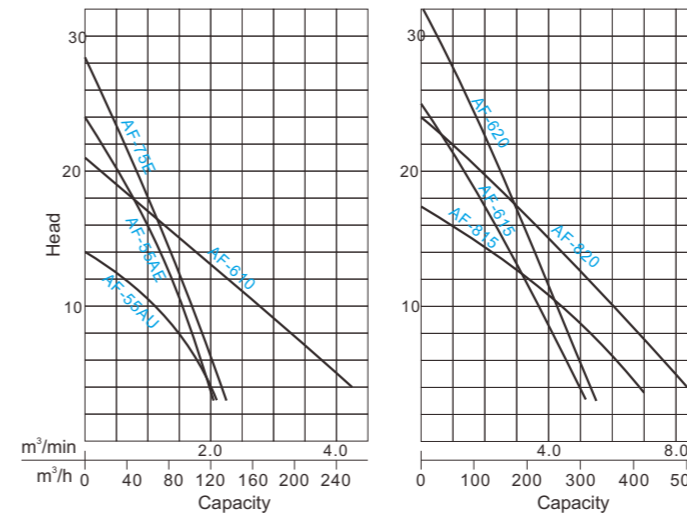
Note : Weight W/O Cable

PRODUCT NOMENCLATURE

AF - 55 A U
Type kW Style Impeller type (E/U)

AF - 6 10
Type Discharge inch HP

PERFORMANCE CURVES



SPECIFICATIONS

Item	Description	
Liquid temp.	0~40°C(32~104°F)	
Applications	Wastewater · Sewage	
Max depth	30m	
Pump sect.	Impeller	Vortex · Enclosed channel
	M. seal	Double M. seals
	Bearing	Ball type
	Upper cover	FC-200
	Casing	FC-200
	Impeller	FC-200
Motor sect.	M. seal	Lower:Sic/Sic · Upper: CA/CE
	Motor	Dry motor 4P (1500RPM)
	Insulation	F Class
	Frequency	50Hz
Material	Protector	Auto-cut (MTP:15~20HP)
	Frame	FC-200
	Main shaft	SUS420J2
	Cable	VCT or H07RN-F or SJOW/SOW

※Pumps can be customized to fit specifications.

PERFORMANCE SPEC.

Pole	Model	Power HP(kW)	Discharge Inch(mm)	Phase	Start Method	Head m	Capacity		Weight kg 3	Solid Passage mm	Dimension (mm)		
							m³/min	m³/h			Length	Width	Height
4P	AF-55AU	7.5(5.5)	4"(100)	3	Direct	10.5	1.0	60	131	65	687	405	795
	AF-55AE	7.5(5.5)	4"(100)	3	Direct	16	1.0	60	139	40	687	405	795
	AF-75E	10(7.5)	4"(100)	3	Direct	18	1.0	60	153	40	687	405	816
	AF-610	10(7.5)	6"(150)	3	Direct	11	2.5	150	221	73	888	449	870
	AF-615	15(11)	6"(150)	3	Y-Δ	15.5	2.5	150	260	70	895	477	1026
	AF-620	20(15)	6"(150)	3	Y-Δ	20.5	2.5	150	183	70	895	477	1026
	AF-815	15(11)	8"(200)	3	Y-Δ	10	4.5	270	270	70	1045	497	1021
	AF-820	20(15)	8"(200)	3	Y-Δ	14	4.5	270	285	70	1045	501	1032

Note : Weight W/O Cable